



**emmerson**  
resources



# Bringing New Technology

to Gold Exploration in Tennant Creek

**AUSTRALIA CHINA**  
Minerals Investment Summit  
澳中南北资源投资论坛

21-23 May | DARWIN  
Darwin Convention Centre  
2013



# Important Notice and Disclaimer

This presentation has been prepared by Emmerson Resources Limited ACN 117 086 745 (ASX: ERM) (the “Company”) and is being provided to a limited number of investors for the sole purpose of providing preliminary background information to enable recipients to review the business activities of the Company. It is not intended as an offer, invitation, solicitation or recommendation with respect to the purchase or sale of any securities.

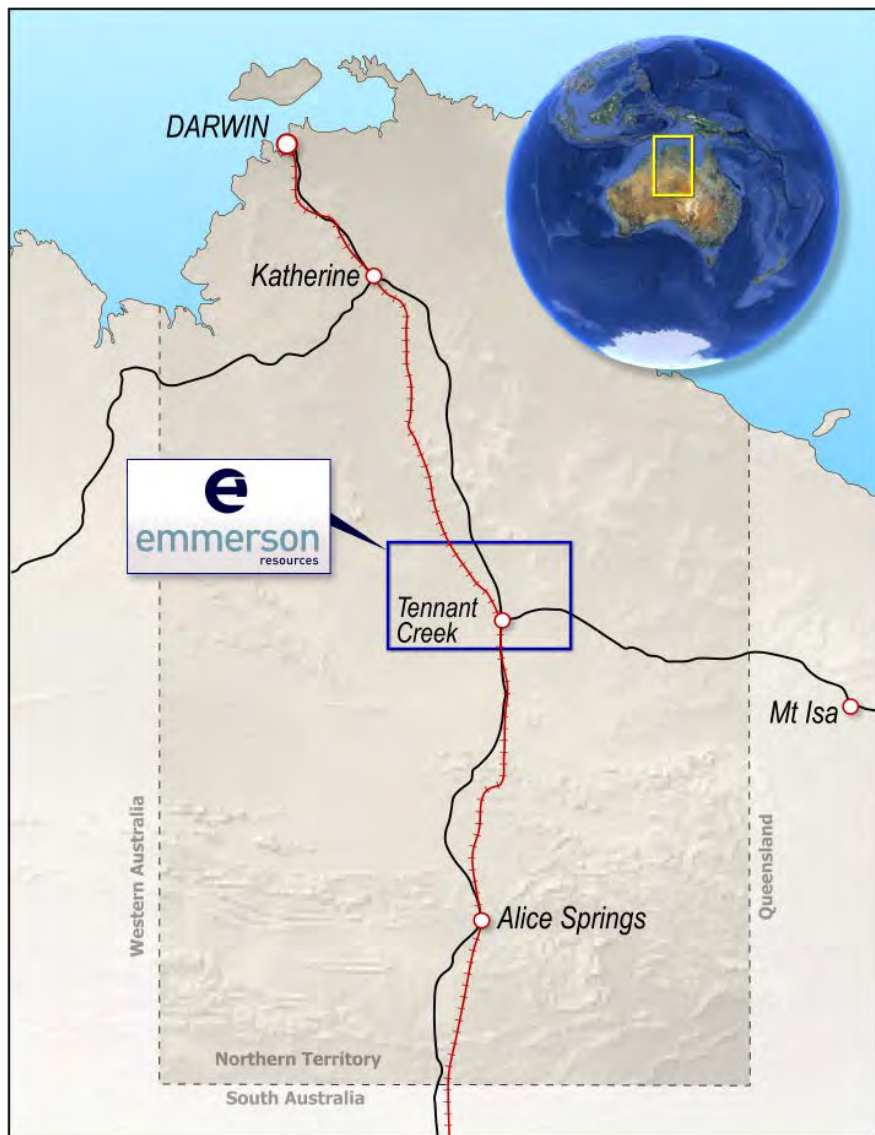
This presentation should not be relied upon as a representation of any matter that a potential investor should consider in evaluating the Company. The Company, nor any of its directors, agents, officers, employees or affiliates does not make any representation or warranty, express or implied, as to or endorsement of, the accuracy or completeness of any information, statements, representations or forecasts contained in this presentation, and they do not accept any liability for any statement made in, or omitted from, this presentation.

Prospective investors should make their own independent evaluation of an investment in the Company.

Nothing in this presentation should be construed as a financial product advice, whether personal or general, for the purposes of Section 766B of the Corporations Act. This presentation consists purely of factual information and does not involve or imply a recommendation or a statement of opinion in respect of whether to buy, sell or hold a financial product. The Company has not considered any of your objectives, financial situation or needs.

This presentation and contents has been made available in confidence and may not be reproduced or disclosed to third parties or made public in any way without the express written permission of the Company.

# Distinguishing Features of Emmerson



## Dominant Ground Position

3000sqkm over the TCMF

## High Grade Gold & Copper

Historically 15-20g/t Au, 2-4% Cu

## Strong Joint Partner

\$28m Farm-in and JV with Ivanhoe Australia

## Processing Plant

Only gold mill in the region on care and maintenance, with good roads, power

## Resources

Currently 390,000 AuEq Oz

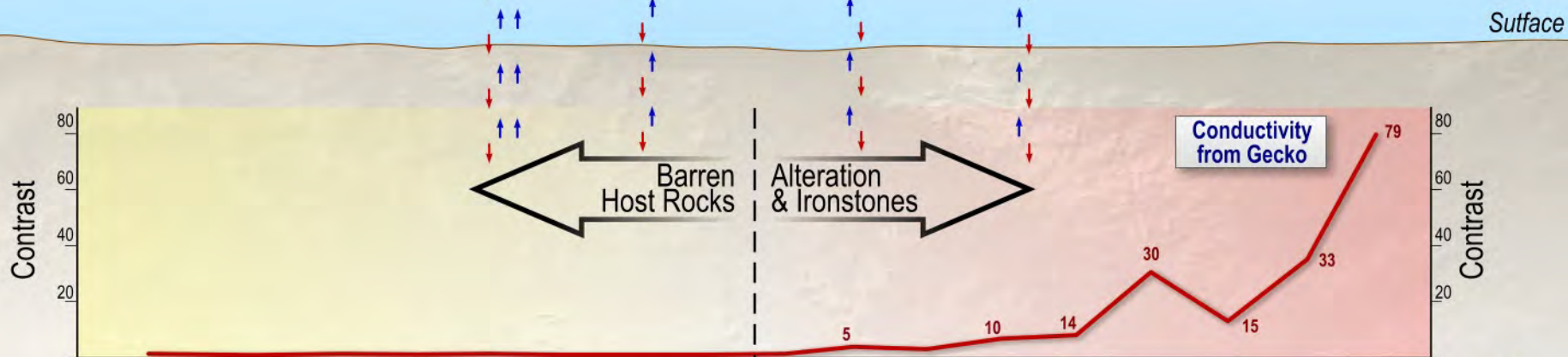
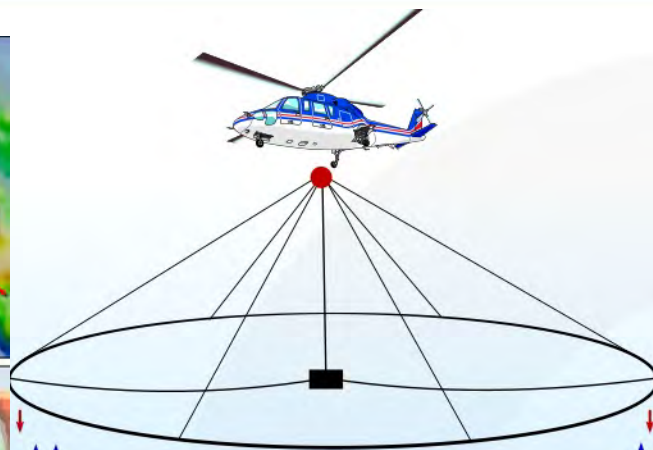
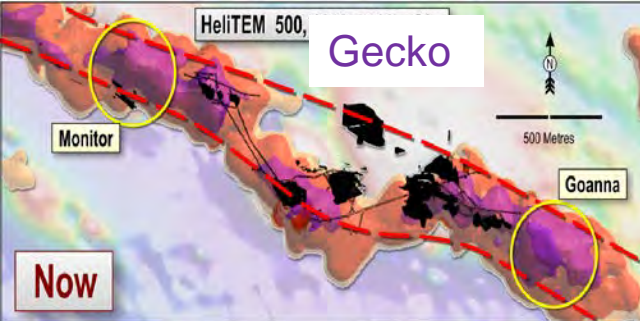
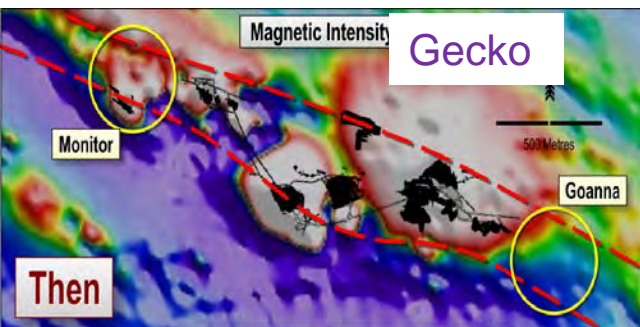
## Big Exploration Targets

12m @ 16.9g/t Gold, 2% copper incl. 4m at 37.4g/t gold

## Emerging Copper Project

24m @ 4% Copper

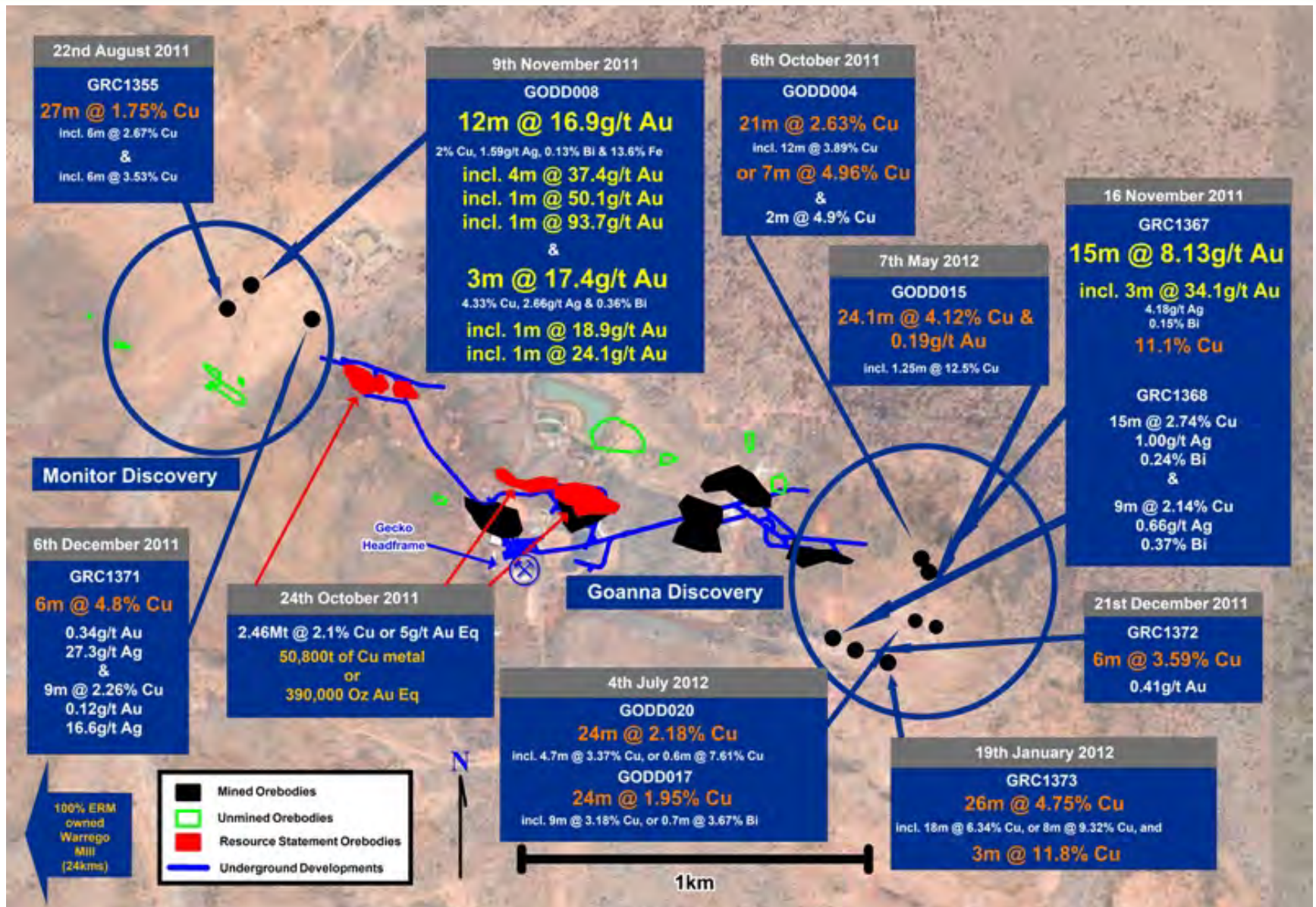
# New Technology Finds New Deposits



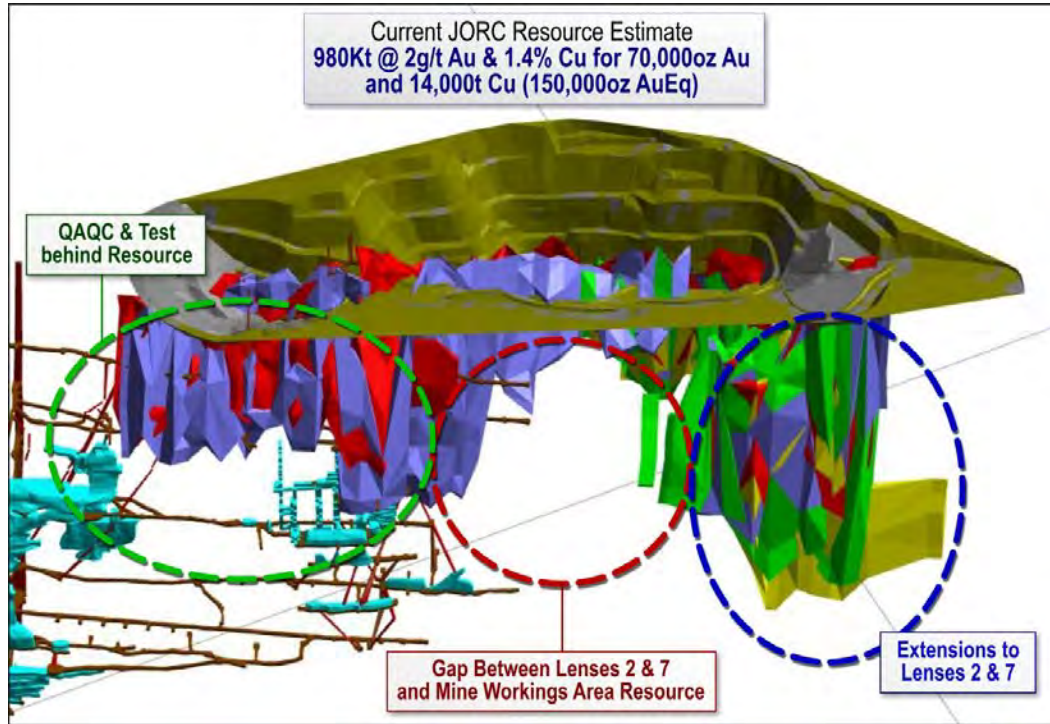
Conductivity of drill core from various deposits in the ERM tenements

Surface

# Emerging Copper & Gold Deposits (ASX Announcements)



# Potential Copper Projects



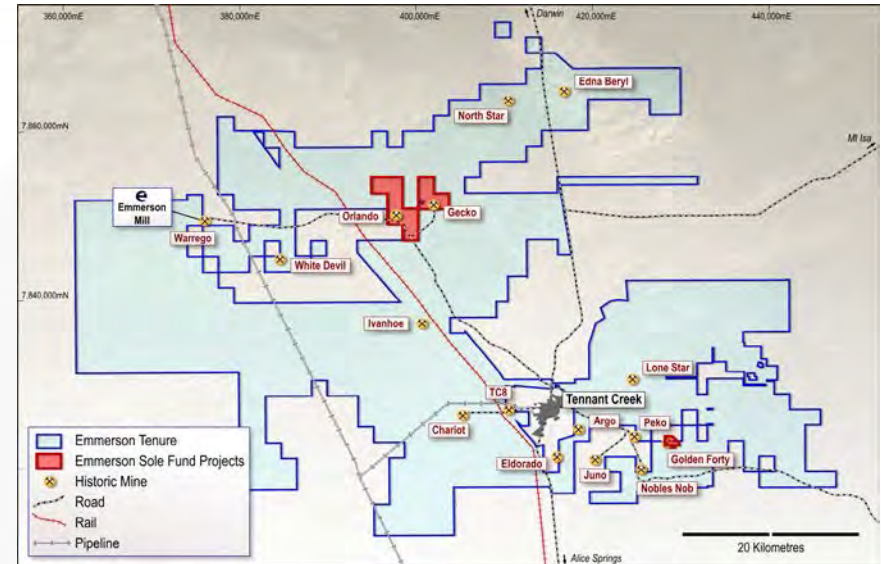
- Two Projects with JORC Resources (Gecko & Orlando)
- Fully Permitted (Mining leases)
- Established Infrastructure within 25km of the Tennant Creek town
  - ✓ Established Mines
  - ✓ Roads
  - ✓ Power
  - ✓ Water
  - ✓ Rail
  - ✓ Mill & Gas

- Pending resource upgrade at **Orlando** (from 2012 drilling)
- Pending maiden copper resource at **Goanna**
- Great potential for further copper & gold

Classification	Tonnes ('000)	Gold grade (g/t)	Copper grade (%)	Gold equivalent grade (g/t)	Gold ounces ('000)	Copper metal (t)	Gold equivalent ounces ('000)
<b>Gecko - Anomaly 3, L25 and K44 Lower (reported above a 1% copper cut-off)</b>							
Indicated	1,400	-	2.5	5.2	-	35,600	230
Inferred	80	-	1.6	3.2	-	1,300	10
<b>Sub-total Gecko</b>	<b>1,480</b>	<b>-</b>	<b>2.5</b>	<b>5.1</b>	<b>-</b>	<b>36,900</b>	<b>240</b>
<b>Orlando - Lenses 2 and 7 (reported above a 1.0 g/t gold equivalent cut-off)</b>							
Indicated	680	2.1	1.3	4.7	50	8,800	100
Inferred	300	1.6	1.7	5.1	20	5,100	50
<b>Sub-total Orlando</b>	<b>980</b>	<b>2</b>	<b>1.4</b>	<b>4.8</b>	<b>70</b>	<b>13,900</b>	<b>150</b>
<b>TOTAL</b>	<b>2,460</b>	<b>2*</b>	<b>2.1</b>	<b>5.0</b>	<b>70*</b>	<b>50,800</b>	<b>390</b>

# Introduction to Emmerson's Projects

- ➔ Large land holding  
(3,000km<sup>2</sup> comprising MLs, ELs)
- ➔ Two discoveries to date  
(Goanna & Monitor)
- ➔ Established JORC compliant resources at  
Gecko and Orlando
- ➔ Future plans include further exploration  
and building the resource inventory ahead  
of a return to production
- ➔ Seeking joint venture opportunities  
and investment in ERM



# Success Through Continued Discovery & Teamwork



## Competency Statement

[www.emmersonresources.com.au](http://www.emmersonresources.com.au)

The information in this report relating to Exploration Results and Mineral Resources is based on information compiled by Mr Steve Russell who is a Member of the Australian Institute of Geoscientists and has sufficient exploration experience which is relevant to the style of mineralization under consideration to qualify as a Competent Person as defined in the 2004 Edition of the 'Australasian Code for Reporting of Exploration Results, Mineral Resources and Ore Reserves'. Mr Russell is a full time employee of Emmerson Resources Ltd. Mr Russell consents to the inclusion in the report of the matters based on his information in the form and context in which it appears.